

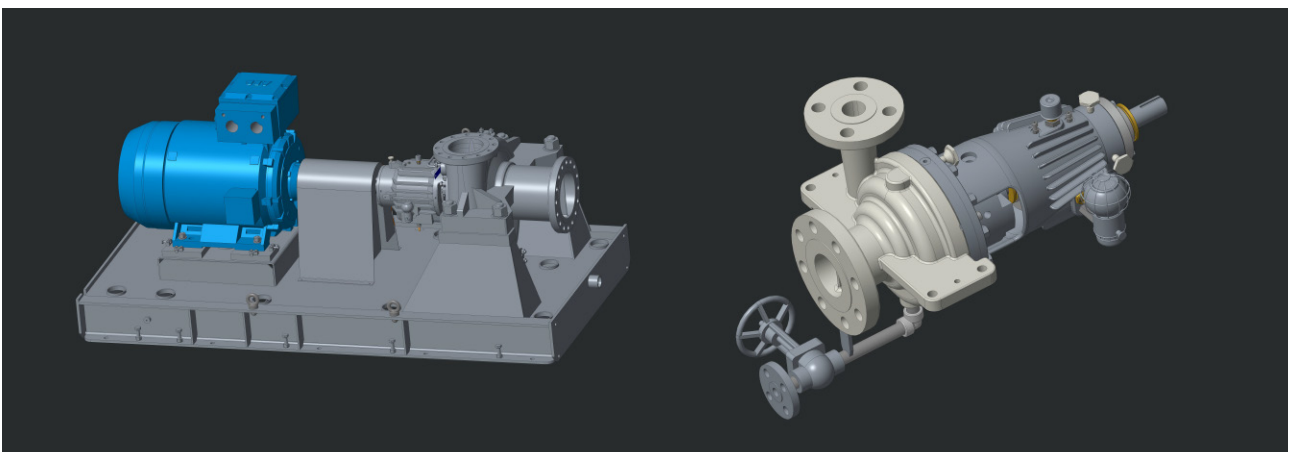
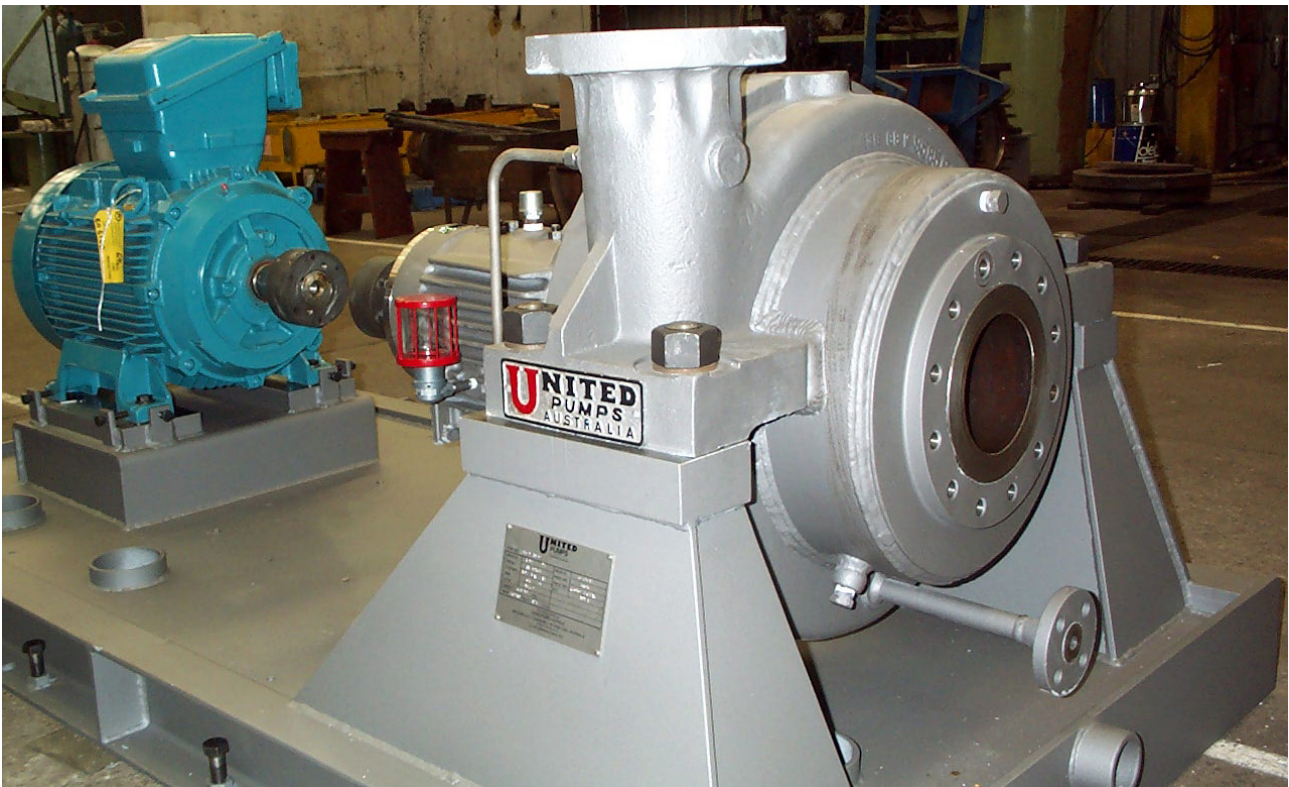


UNITED PUMPS
U.C.P. AUSTRALIA

MODEL ATC

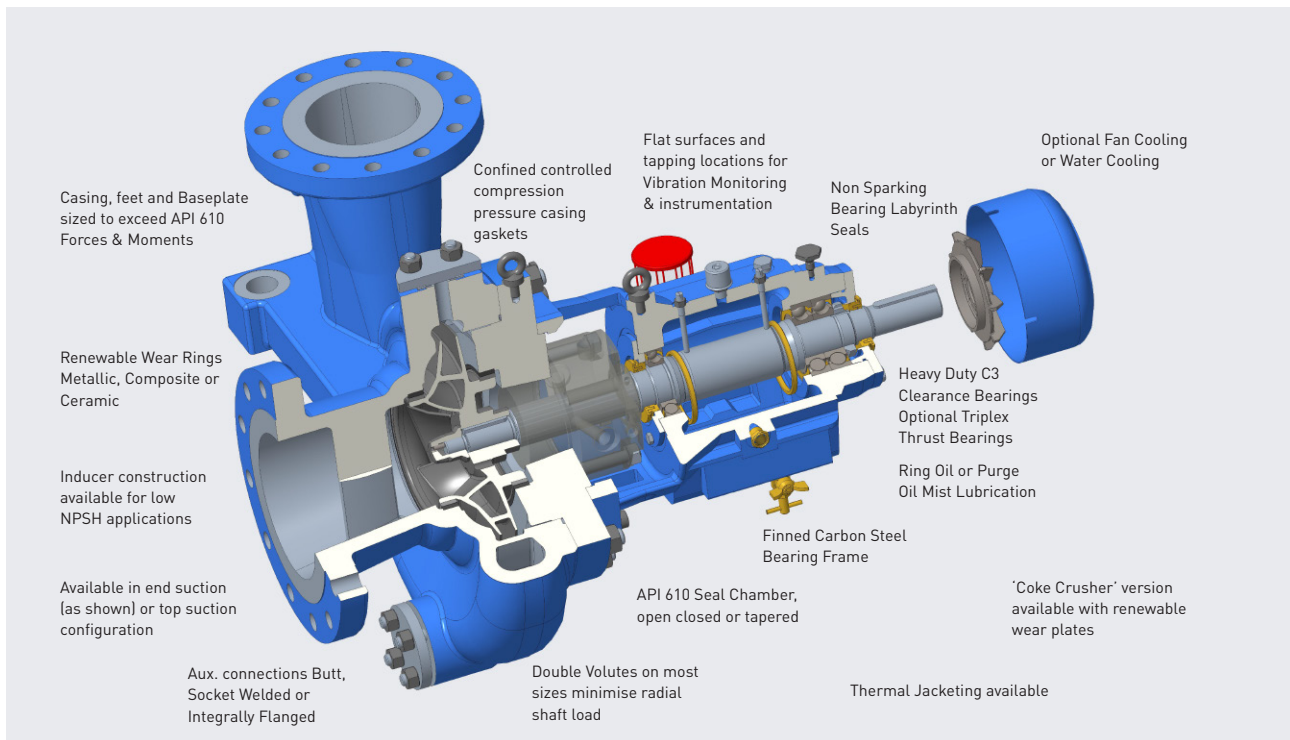
Single Stage API 610 Process Pump (OH2)

- Radially Split
- Centre Line Mount
- Heavy Duty (2xAPI) Nozzle Loads
- Back Pull Out Rotating Assembly



A Heavy Duty Pump Designed to meet or exceed API 610 Requirements.

Manufactured in AUSTRALIA



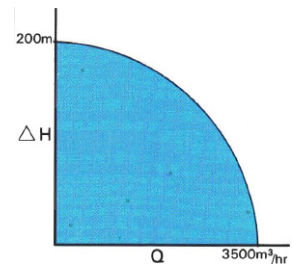
The Industry Standard for API 610 Process Pumps.

The ATC range is the benchmark Heavy Duty API 610 Process Pump with renowned rugged reliability.

Designed with CAE for API Nozzle Loads as evidenced by Heavy Case Feet and Base Pedestals.

STANDARD CONSTRUCTION :

- Temperatures to 430°C (800°F)
- Pressures to 41 barg (600 psig) – Higher Ratings Optional
- Stiff Shaft Design
- Renewable Case and Impeller Wear Rings
- End or Top Suction Nozzles



UNITED'S engineering emphasis allows design options to meet specific customer requirements.

OPTIONS:

- Tandem or Double Seals
- Triplex Thrust Bearings
- Jacketed Case and Seal Chamber
- Higher Nozzle Ratings & Special Facings
- Bearing Cooling: Fan or Water Cooled
- Double Suction Impeller
- Bearing RTDs and Vibration Sensors
- Oil Mist Lubrication
- Composite Material Wear Rings & Bushes
- Custom Hydraulics
- High Temperature/Pressure Ratings
- Special Materials



www.unitedpumps.com.au

T: +61 3 9464 9500

F: +61 3 9312 6371

31 Western Avenue, Sunshine
Victoria 3020, Australia

A.B.N. 37 006 317 979